

**Marketing Office
Cnr Ashford & Brakfontein Road
Bondev Office Park
Block C, 1st floor
Midstream Estate
Pretoria
1692**

Tel: 021 661 1406
Fax: 021 661 5438
Email: Sales@entrwood.co.za

**Entrawood and Entrakor Factories
16 Mota str.
Industriqwa
Harrismith
9880**

Tel: 058 635 1128
Fax: 058 635 1219

www.entrwood.co.za

Registration no's
Entrawood cc. - CK 1989/041325/23
Entrakor(Pty)ltd. - 1999/002501/07

Vat no's
Entrawood cc. - 4600114088
Entrakor(Pty) Ltd. - 4900181738

THE FACTORIES

Our Factories started more than 20 years ago, Initially manufacturing steel tables and chairs for the household furniture market.

The factories are central to major cities, situated in Harrismith next to the N3, halfway between Durban and Johannesburg, .

The manufacturing plant is housed in 11 000 m² and we currently manufacture more than 5000 components a day.



With the combined capability of Entrawood and Entrakor we are able to cost effectively manufacture our unique wood and steel furniture products.

- Entrakor manufactures the steel frames and does upholstery.
- Entrawood manufactures mainly the wood furniture.

ENTRAWOOD

This year saw another big investment in plant, equipment and design, turning Entrawood into a world class manufacturing facility. With both Entrawood and Entrakor scoring above 80% on our x audit conducted by SABS.

Entrawood has its own melamine plant, allowing us to produce better quality products with a high quality finish. Melamine is also more environmentally friendly than the PVC products we produced previously. This in-house plant means that we could run any melamine colour or even pattern, on condition that the product run is long enough. It also makes us more independent, as we aren't bound by price changes or limited colours from board suppliers.



UPGRADING - MELAMINE PRESS

Board

- 16, 22 and 32mm
- 2750mm x 1830mm board
- Double face

Press

- Press at 200 degrees Celsius
- 26kg per square centimetre = 1300 tons
- 30 seconds per board

Boiler

- 1 litre diesel per board

ENTRAWOOD

We are the first and only manufacturer in SA to invest in a Warehouse Handling System. Our 2 beam saw's are fed from a shared, fully automated warehouse system which require no human handling until the board has been cut into various components.

This system fully maximises the use of raw material, which reduces waste, cost and time, while also supporting environmental sustainability.



COMPONENT FACTORY

Cutting

- Beam saw with automatic loading facility and warehouse.
- Cuts up to 4 boards simultaneously.
- Stores and retrieves, 3 thickness's and 6 colours automatically.
- Cuts 2000 Components daily.



Edging



CNC Drilling



Manual Cleaning



Assembly and Packaging

ENTRAWOOD

Edging

Newest technology in edge banding ensures a high quality finish.

- Edges 16, 22 and 32m
- 0.6, 1 and 2mm thickness.
- PVC edging, glued to board with hot melt glue.
- Edges 2500 Metres daily.

CNC Drilling

CNC machine(Computer Numerical Control) ensures all our knock down products are able to be assembled easily.

- Drills holes at pre programmed positions.
- Cuts any programmed shape.
- Edge shaped sides
- 12000 holes are drilled daily.

Cleaning

Automatic cleaning machine.

Manual Cleaning

All components are checked and manually finished.

Assembly and Packaging

Our packaging ensures that your furniture will arrive in pristine condition after the long haul.

Assembly

- All storage units assembled manually.

Packaging

- Hardware packed with visual string.
- Products packed in boxes and shrink-wrapped.
- Clearly marked labels.

ENTRAWOOD

Dispatch

- Loading from bays to ensure accuracy
- Indoor loading
- Load and deliver 3000 cubes/360 tons of office furniture a month



ENTRAKOR

Entrakor - established in 1985 - manufactures the steel frames for different upholstered stacking chairs, training tables and steel desks.

The combined capability of Entrawood and Entrakor allows us to make unique products, cost effectively. Entrakor is able to utilise off-cuts from Entrawood incorporating it into various products. This saves on material costs and reduces waste, which supports environmental sustainability.



ENTRAKOR

UPHOLSTERY

Prepare chipboard for upholstery

- Chipboard gets cut to size at Entrawood.
- Entrakor routers chipboard into shape for seat and back.
- Soften edges to prevent upholstery damage.

Glue foam onto board

Cutting

- Cut square by hand, to size
- Cut to shape in press with template blade.

Sewing

- Seats and back are sewn for upholstery.

Upholstery

- 200 Staples per chair
- 700 – 800 seats and backs upholstered every day.



ENTRAKOR

STEEL

Pipe bending

- Bend different components to spec, ready for welding.

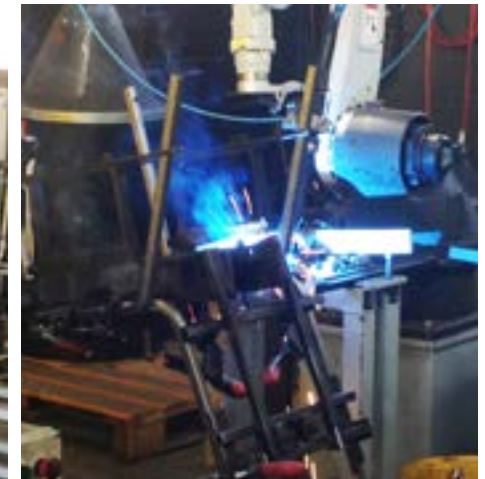


CO2 Welding



Manual welding

- Banquet chairs and steel desks.
- Rotating jig for steel legs, to weld both sides without taking leg out of jig, prevents leg from pulling skew.



Robot welder

- 2 jigs
- Welds 350 rickstackers per shift.
- Works 24 Hours a day.

ENTRAKOR

Powder coating

- Frames are washed in special soap mixture
- Continues plant runs at 95 units per hour.
- 200 degrees Celsius.



Assembly and packaging



ENTRAKOR

STEEL DESKING

Flow Drill

Tungsten point at High friction melts steel tube to thicken from 1.6mm to 4.8mm thus a bigger surface to thread.

Laser test

Self levelling laser to check the square levels on the steel desks.

Every desk is also pre-assembled to ensure accurate and ease of assembly for the end user.

Stock

We keep 2000 of each chair colour in stock.



OUR SERVICES

GUARANTEE HIGH QUALITY PRODUCTS

With both Entrawood and Entrakor scoring above 80% on our x audit conducted by SABS.



Client Services

We undertake regular client visits and assist retailers and wholesalers in growing their sales.

We assist you with the quoting and our sales office is always ready to answer any queries.

Planning and Flexibility

Meticulous planning guarantees delivery on time.

We have short lead times of +/-3 weeks to do a project with layouts, planning, manufacture and deliver.

Product Development and Design

Our design department have 2D as well as 3D rendering capabilities to assist you with the space planning and 3D presentations.

Keeping an eye on local and international trends to ensure that we are adapting our product offering to suit ever evolving work environments.

In-house ERP (Enterprise Resource Planning) System

Fully integrating accounting and manufacturing software developed by us that is tailored to our systems and standards.

OUR COMMUNITY

Entrawood and Entrakor have around 190 employees all from the local communities, some of our staff have been with us for over 20 years.

All our employees undergo extensive in-house training to ensure they have the necessary skills to work in a world class facility.

Maluti Child Care Project

We are proud to be a part of the Maluti Child Care Project. The Feeding Scheme is able to feed between 3,800 to 4,500 orphans under the age of 15 years in the neighbouring communities of Harrismith.

This is done from kitchens built into seven containers and one school. These kitchens are spread over different townships and settlements, with three containers in the school in Intabazwe, three containers in Tsiamé B and one container in Mokolokweng and are open Mondays to Fridays throughout the year.

Green Harrismith

Entrawood is also an active member of Green Harrismith – a project launched by local businesses to protect the natural resources in the area. Entrawood has aggressively minimized waste creation and regularly initiates clean up exercises in the area.

Our Employees



Maluti Child Care Project



Green Harrismith

